

Household Garbage/Recycle

Jackson County utilizes Waste Management for household garbage pickup and curbside recycling. Please contact Waste Management for garbage containers, recycling containers and pickup schedule.

Waste Management (228) 831-8900

Medical Waste

Individuals

Call your local hospital or pharmacy

Commercial

Target Waste Systems- (228) 497-7170

Medical Disposal Systems (228) 217-7002

Environmental Issues

MS Department of Environmental Quality

(228) 432-1056, (601) 961-5171, (888) 786-0661

www.deq.state.ms.us

Environmental Protection Agency

(800) 241-1754

www.epa.gov

Hazardous Spill

Office of Emergency Services

(228) 769-3111

Sheriff's Department

(228) 769-3063

Exposure to Hazardous Waste

Singing River Hospital (228) 938-5000

Poison Control (800) 222-1222

Stop Illegal Dumping

Illegal dumping is the dumping of waste in an unpermitted area. Illegally dumped wastes are primarily non-hazardous materials that are dumped to avoid either disposal fees or the time and effort required for proper disposal. Many health risks are associated with illegal dumpsites and they are a serious problem.

First Offense = \$50 - \$250 Fine

Second Offense = \$100 - \$500 Fine

Report Illegal Dumpsites to:

Enforcement Officer

SWEO@co.jackson.ms.us

872-8340

Privately Owned Landfills

Applewhite-Waste Pro

Gautier- (228) 818-5393

Macland Ash Disposal Inc

Moss Point- (228) 475-9750

Macland Hwy 613(Waste Management)

Moss Point- (228) 831-8900

Talleys-Waste Pro (228) 818-8393

Please call the individual landfills for restrictions and fees

Created 4/20/2009/Ronda Powell

Last Edited: 04/18/19RP



Jackson County Landfill

10501 Seaman Road | Vancleave

228-872-8340

ONLY JACKSON COUNTY RESIDENTS ARE ALLOWED TO UTILIZE THE LANDFILL

Jackson County Board of Supervisors

Mississippi Department of
Environmental Quality

Jackson County Rubbish Pickup

The Jackson County Solid Waste Department provides a once a month bulk waste pickup service for the unincorporated County **residential homes (bulk waste that can not be put in proper format for the waste haulers to take)**

Limitations

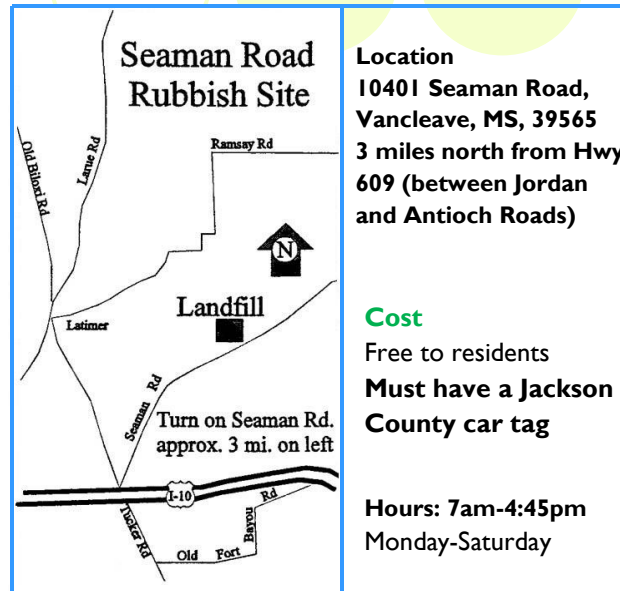
(Effective as of 9/8/2000 Ordinance)

- The maximum volume of trash, trees, debris and/or vegetation that Jackson County may remove per pickup month is three (3) cubic yards.
- Jackson County hereby ceases the pickup of trash, trees, debris and/or vegetation that is the result of having been cleared off a vacant lot or vacant lots.
- Jackson County hereby ceases the pickup of trash, trees, debris and/or vegetation that is the result of a structure or structures being built and/or renovated.
- In the event trash, trees, debris and/or vegetation is placed in the street, roadway, or highway, said material will be placed back onto the property from which it came and will not be taken away by the County.
- The Ordinance shall not be in effect in an emergency situation declared by the Jackson County Board of Supervisors.

The County is very limited in manpower and vehicles, having only one worker and one truck for each of the three areas. Residents are encouraged to use the landfills whenever possible, especially during the dry spells in an effort to prevent fire hazards.

- The County does not pick up or accept household garbage at the landfill. Garbage must be bagged and placed in correct container.
- Household Hazardous waste should be stored properly until amnesty day which is usually held in April.

Jackson County Landfill



Location
10401 Seaman Road,
Vance, MS, 39565
3 miles north from Hwy
609 (between Jordan
and Antioch Roads)

Cost
Free to residents
**Must have a Jackson
County car tag**

Hours: 7am-4:45pm
Monday-Saturday

Accepted Items (must be separated)

- Non-treated Wood
- Metal
- Rubbish
- Brick
- Mortar
- Stone
- Glass
- Plastic
- Asphalt
- Sawdust
- Furniture
- Concrete
- Cardboard boxes
- White Goods (motors removed)
- Crockery & metal (except containers)
- Natural Vegetation (limbs, stumps, leaves)
- Wood Shavings
- Wood Chips (uncontaminated)

Recycle Items with restrictions:

- Tires
- Cut/shredded tires
- Batteries
- Refrigerators
- Televisions
- Computer Monitors
- Computer Towers

Items NOT Accepted (at the landfill)

- Any waste contaminated by a possible pollutant, such as food or chemicals**
- Household garbage
- Food or Drink waste
- Industrial waste
- Liquids or Sludges
- Special Waste Treated Wood
- Contaminated soils
- Paint or paint buckets**
- Oil containers and chemical containers**
- Any metal, glass, plastic, or paper container
- Fabric (large amounts of new)
- Paper wastes
- Engines or motors
- Toxic or hazardous waste **
- Asbestos and asbestos containing material
- Medical Waste
- Other waste which may have an adverse effect on the environment

** **Hazardous Waste Items can be dropped off during the municipalities' Amnesty Day.**

NO BUSINESSES, CONTRACTORS, COMMERCIAL VEHICLES OR LARGE GENERATORS OF WASTE ARE ALLOWED TO UTILIZE THE LANDFILL.

www.co.jackson.ms.us/DS/Solidwaste
SolidWaste@co.jackson.ms.us